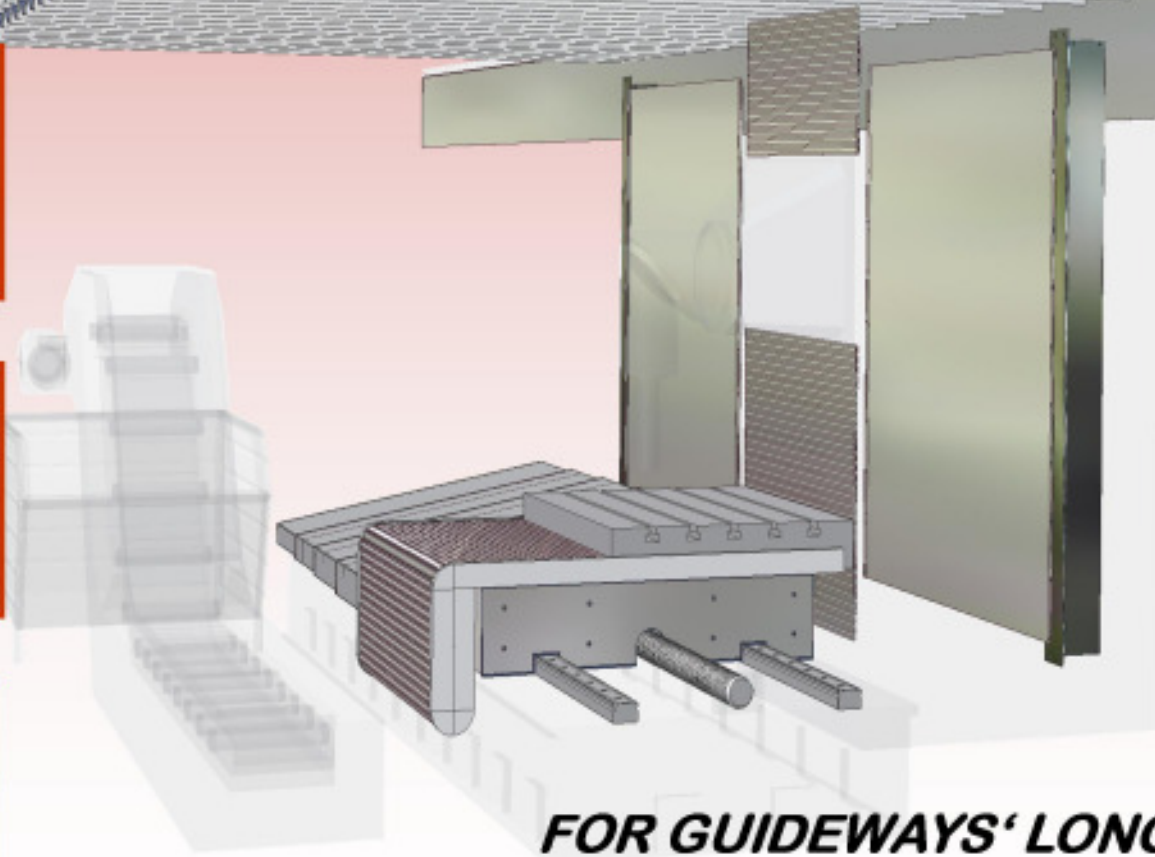
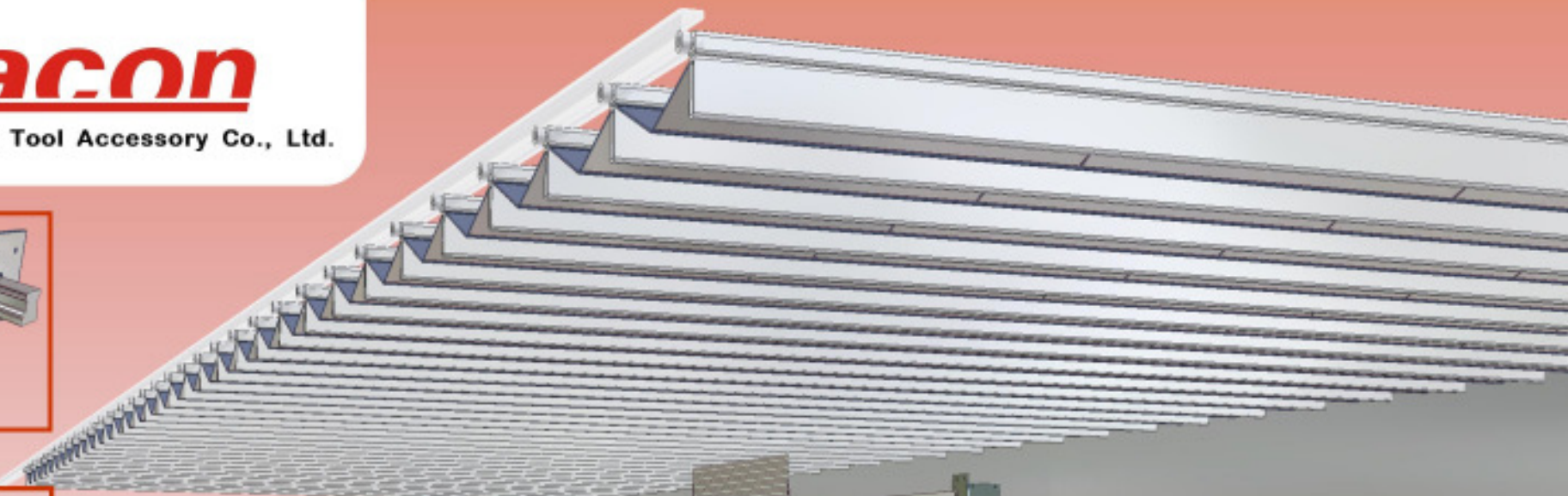
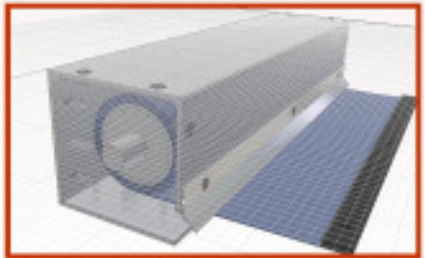
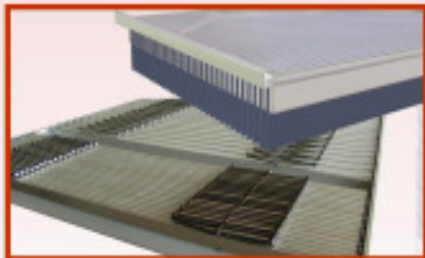
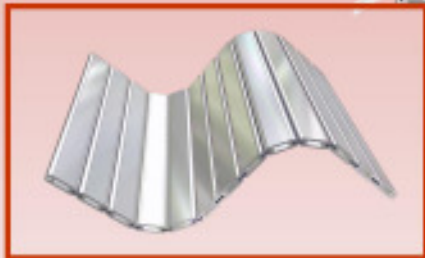
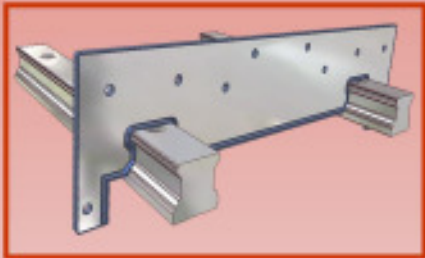


# ***thodacon***

Wuxi Thodacon Machine Tool Accessory Co., Ltd.



**In accordance with  
the European  
manufacturing  
technique**

***FOR GUIDEWAYS' LONGER LIFE ...***

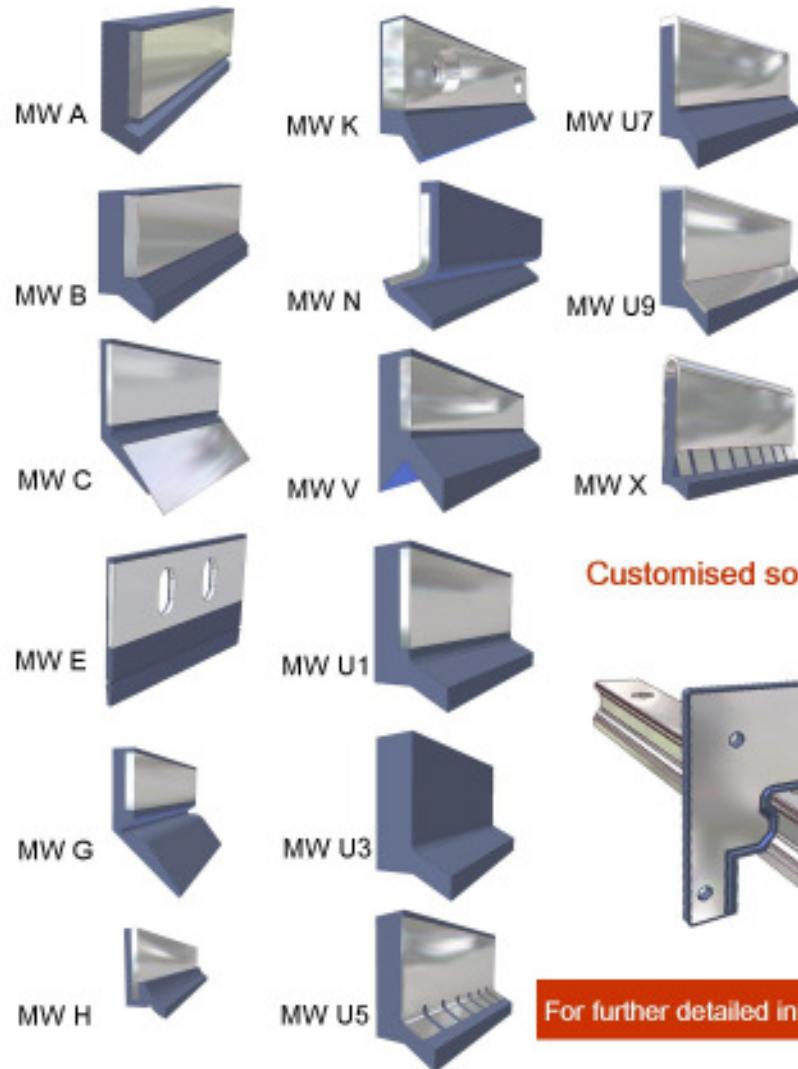
# Way Wipers/Sealings

**thodacon**

Wuxi Thodacon Machine Tool Accessory Co., Ltd.

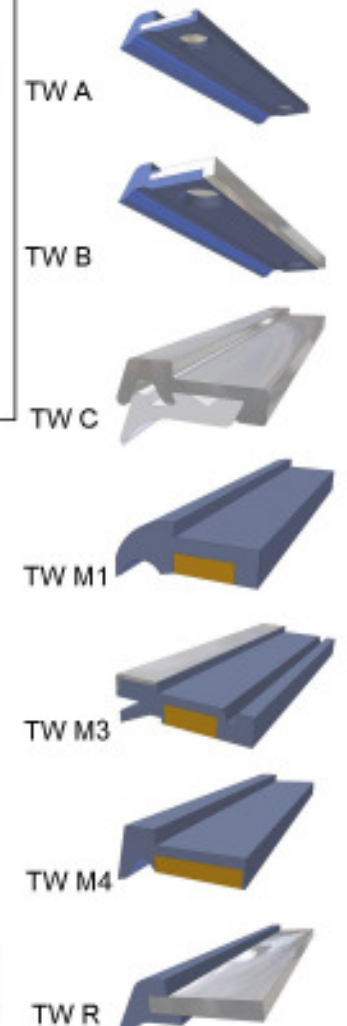
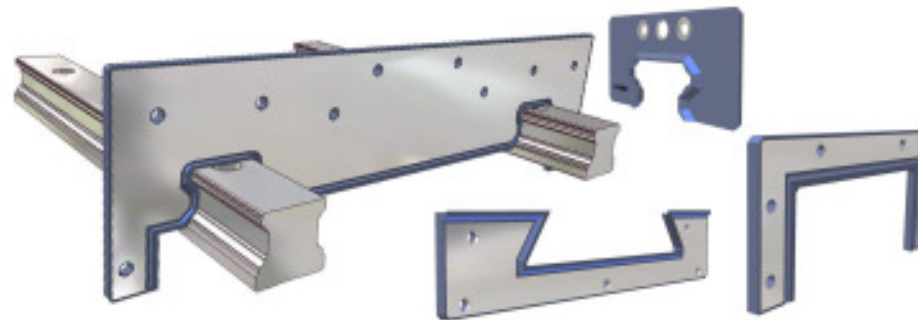
Standard Series MW (Moulded Wipers for guideways):

Standard Series TW (Telescopic Wipers):



- A big range of stock wipers available
- Any special shape according to your requirement possible
- Resistant to the machine tool requirements
- Long durability
- Special range for telescopic covers (TW-Series)
- Special range of guideway wipers (MW-Series)

Customised solutions: Moulded Wipers according to your requests:

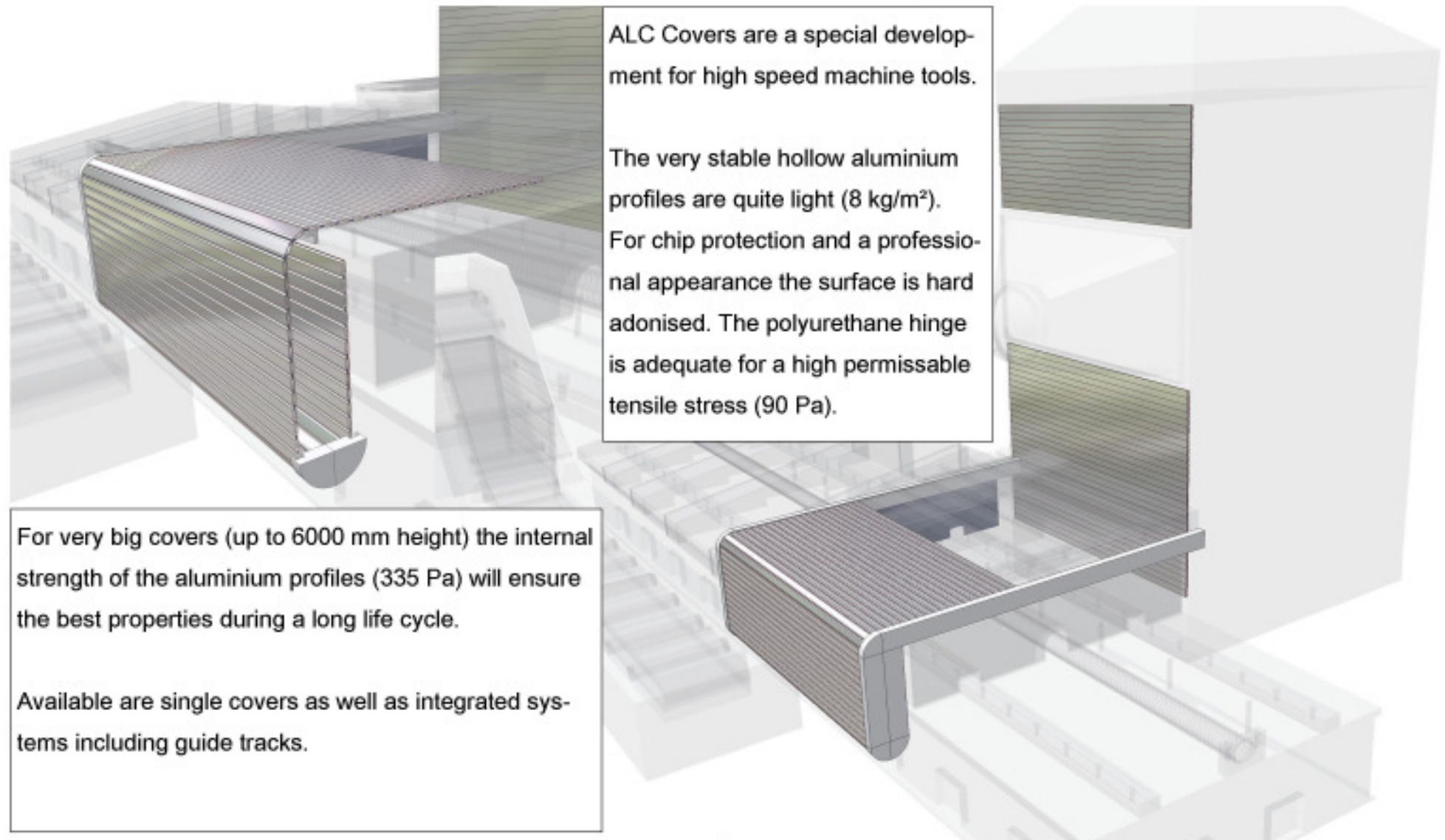


For further detailed information please request our special catalog: Way Wipers/Sealings

## Aluminium Link Type Covers

**thodacon**

Wuxi Thodacon Machine Tool Accessory Co., Ltd.



ALC Covers are a special development for high speed machine tools.

The very stable hollow aluminium profiles are quite light ( $8 \text{ kg/m}^2$ ). For chip protection and a professional appearance the surface is hard anodised. The polyurethane hinge is adequate for a high permissible tensile stress ( $90 \text{ Pa}$ ).

For very big covers (up to 6000 mm height) the internal strength of the aluminium profiles ( $335 \text{ Pa}$ ) will ensure the best properties during a long life cycle.

Available are single covers as well as integrated systems including guide tracks.

# Aluminium Link Type Covers

**thodacon**

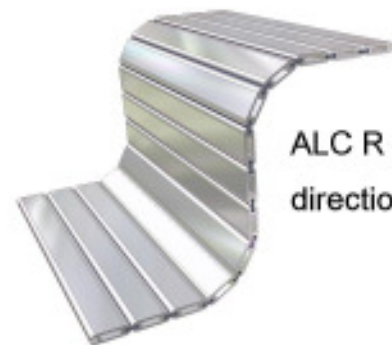
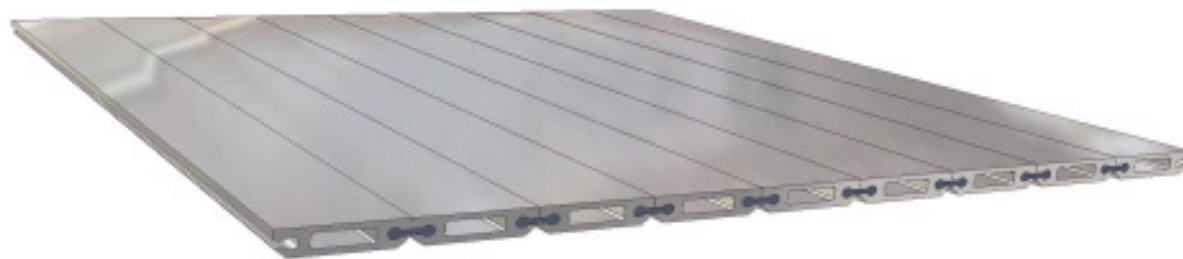
Wuxi Thodacon Machine Tool Accessory Co., Ltd.

ALC Covers, waterproofed for high speed using, up to 200 m/min and 1.5 g:

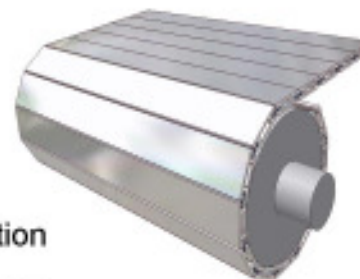


ALC F - easy to combine with Thodacon Wipers

Various possibilities ensure flexible applications...

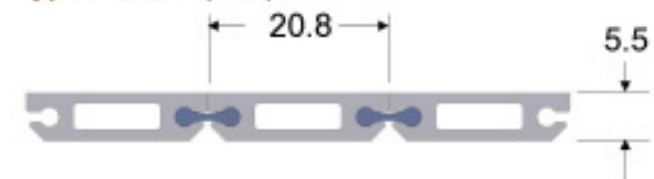


ALC R - easy to fold in two directions

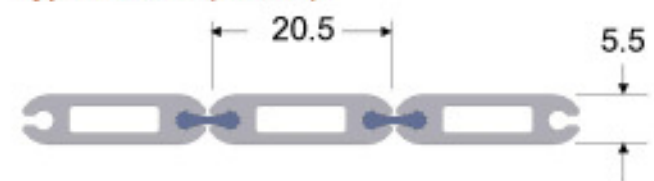


ALC - in combination with roll-aways

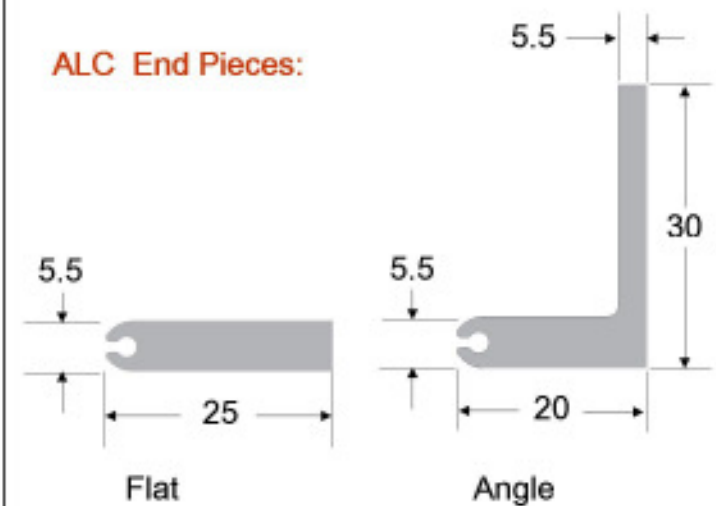
Type ALC F (Flat):



Type ALC R (Round):



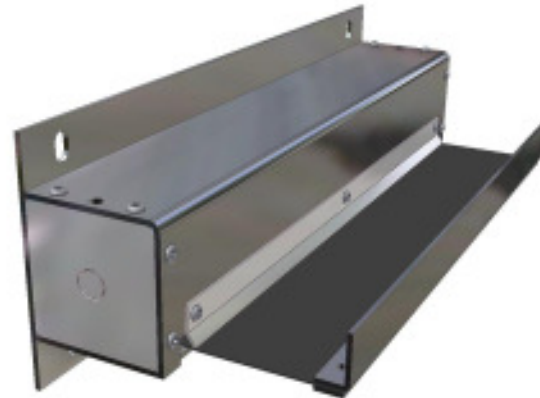
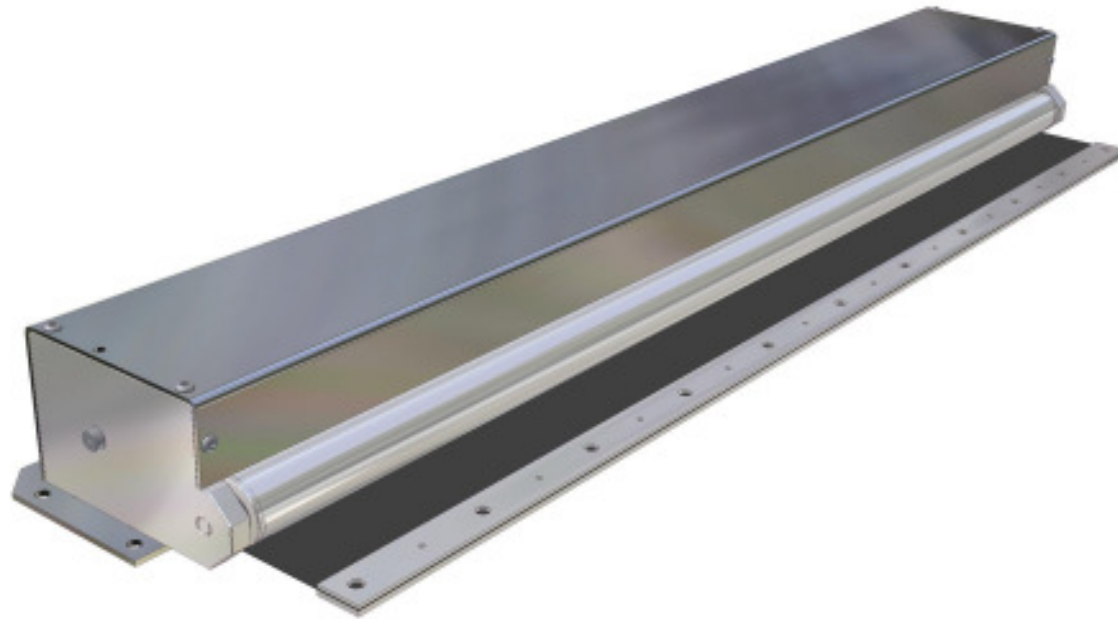
ALC End Pieces:



## Roller Covers

***thodacon***

Wuxi Thodacon Machine Tool Accessory Co., Ltd.



Thodacon's Roller Covers are elaborated parts.

All materials are developed for the special requirements of machine tools.

The huge field of applications in the machine tool sector has been creating evolutionarily a big number of different solutions as well.

The grade of innovation makes the Thodacon roller covers the best choice for industrial purposes.

- Easy to install
- For small space requirements
- Long durability
- For high dynamic requirements
- New fashion design

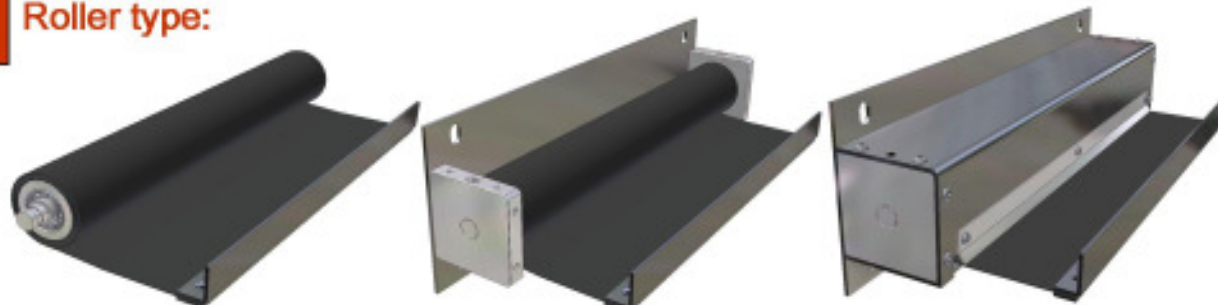
# Roller Covers

**thodacon**

Wuxi Thodacon Machine Tool Accessory Co., Ltd.

*Inquiry path, sheet 1:*

## Step 1 Roller type:



A

B

C

A = pure roller cover    B = with bearing pedestal    C = with housing

## Step 2 Housing type:



S

F

P

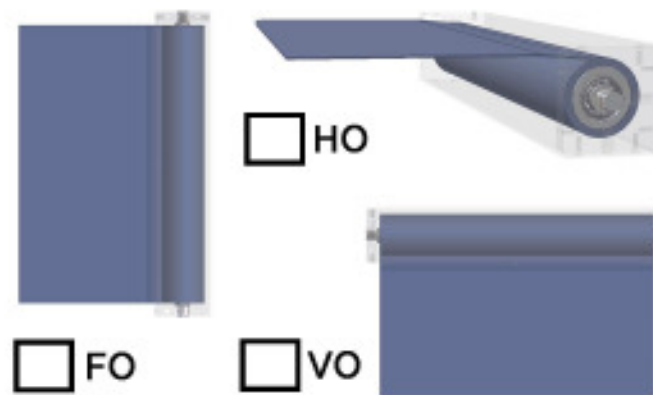
S = wiper position Straight to band

F = wiper position Flat to band

P = wiper position flat to band with Pulley

## Mounting positions:

Step 3



FO

VO

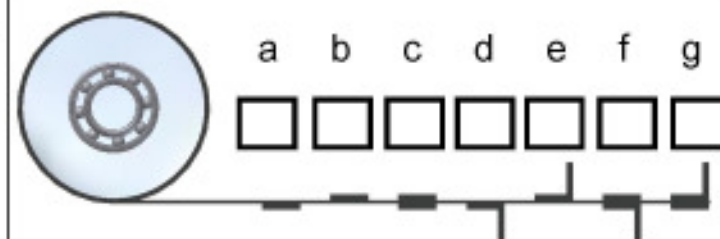
HO = Horizontal Operation

FO = Frontal Operation

VO = Vertical Operation

## Attachment of the band:

Step 4



# Roller Covers

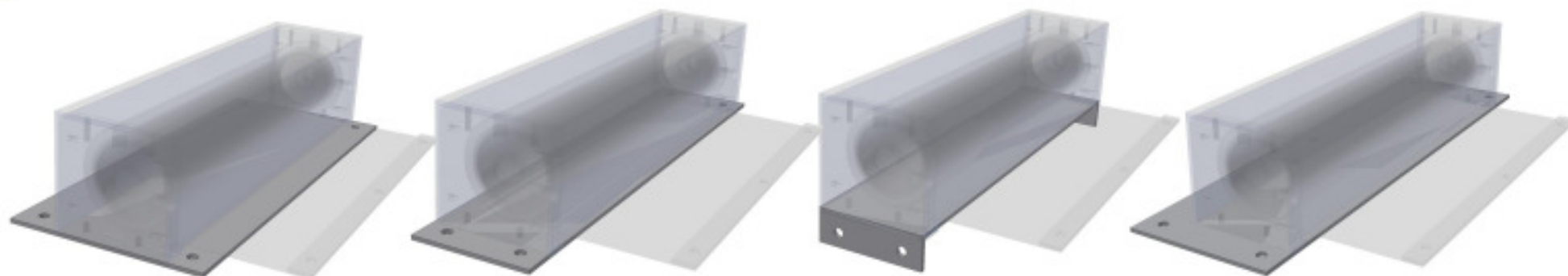
**thodacon**

Wuxi Thodacon Machine Tool Accessory Co., Ltd.

*Inquiry path, sheet 2:*

## Step 5 Connection plate\*:

\* Four kinds of connection plates are available, further variations on request

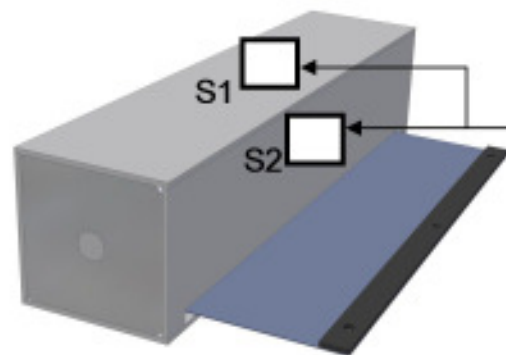


F1

F2

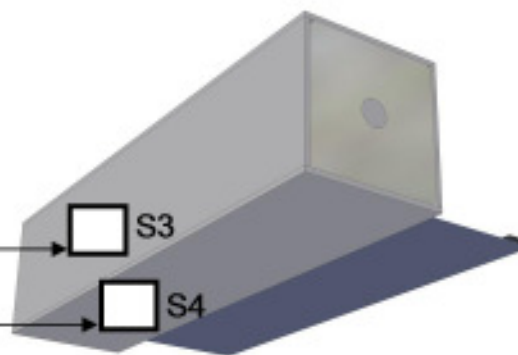
F3

F4



S1

S2



S3

S4

Position of connection plate:

## Step 6

S1 = Top Plate

S2 = Front Plate

S3 = Back Plate

S4 = Bottom Plate

# Aluminium Link Type Covers

**thodacon**

Wuxi Thodacon Machine Tool Accessory Co., Ltd.

*Inquiry path, sheet 3:*

**Step 7**

**Band Material:**

No.	Material*	Color	Thick- ness(mm)	Thermal Properties (°C)			Material Resistant to
				min	max	short time	
01	PU/Polyester	Black	0.9	- 35°	+ 80°	+120°	dust, oil, coolants, water
02	PU/Polyester	White	0.9	- 35°	+ 80°	+120°	dust, oil, coolants, water
03	PU/Polyester	Green	0.9	- 35°	+ 80°	+120°	dust, oil, coolants, water
04	PU/Polyester	Green	1.5	- 35°	+ 80°	+120°	dust, oil, coolants, water
05	PVC/Polyester	Black	0.9	- 25°	+ 80°	+120°	dust, water
06	PVC/Polyester	White	0.9	- 25°	+ 80°	+120°	dust, water
07	PVC	Transparent	1.5	- 25°	+ 80°	+100°	dust, water
08	FPM/Polyester	Black	1	- 40°	+120°	+200°	acids, dust, oil, coolants, water, alkaline
09	Alu Cover ALC R	Silver	5.5	- 35°	+ 80°	+120°	dust, oil, coolants, water
10	Alu Cover ALC F	Silver	5.5	- 35°	+ 80°	+120°	dust, oil, coolants, water
11	Stainless Steel	Silver	0,3	- 40°	+ 100°	+300°	acids, dust, oil, coolants, water, alkaline

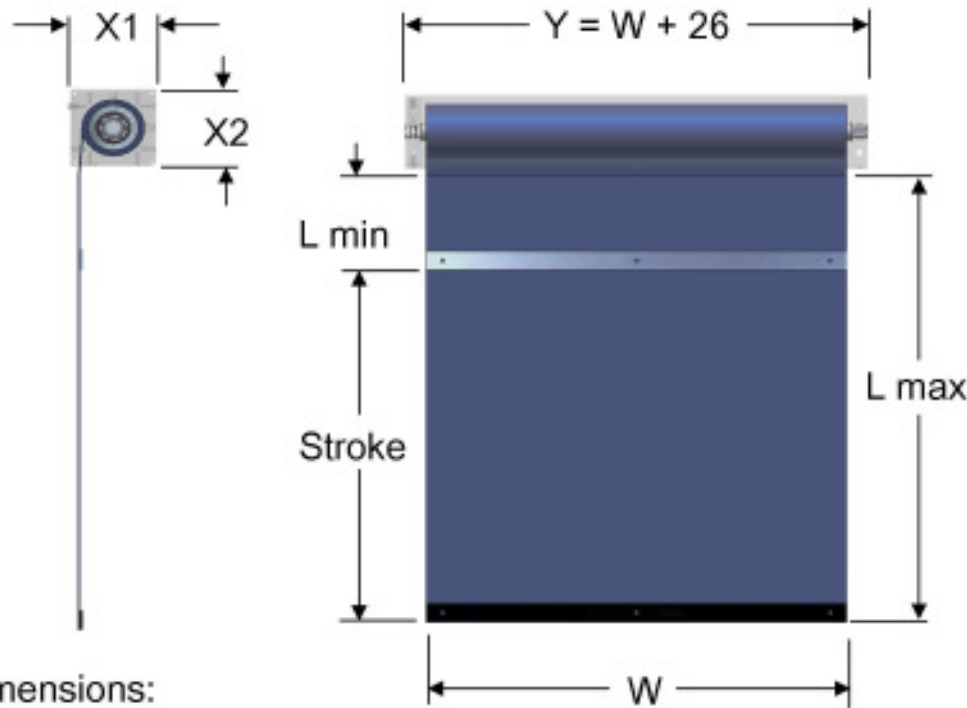
\* Survey of Main Band Materials, further Materials on request

# Roller Covers

**thodacon**

Wuxi Thodacon Machine Tool Accessory Co., Ltd.

*Inquiry form, please complete according to the previous pages:*

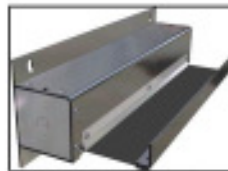


Dimensions:

L min:		mm
L max:		mm
Stroke:		mm
W:		mm
X1:		mm
X2:		mm
Speed max:		m/min
Acc. max:		m/s <sup>2</sup>
Quantity pb.		pce
Quantity pa.		pce

**Step**    1    2    3    4    5    6    7

C	S	HO	e	F1	S3	01	



Example Cover

Your Company .....

Contact .....

Place/Country ..

Telephone .....

Email .....

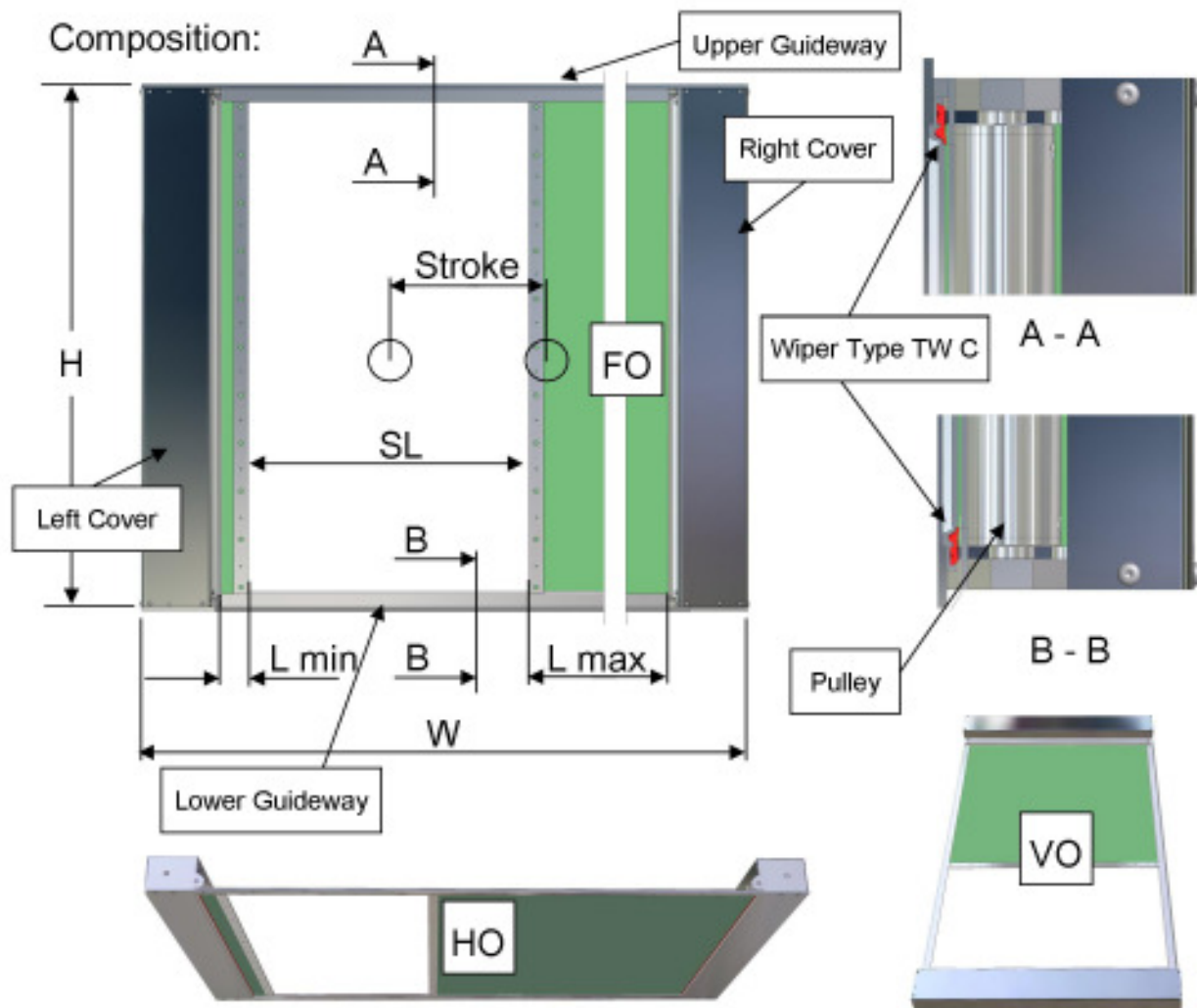
# Roller Covers/Cover Systems

**thodacon**

Wuxi Thodacon Machine Tool Accessory Co., Ltd.

Powerfull in combination — Cover Systems for X, Y or Z Axes

Composition:



Inquiry form, please complete :

- HO
- FO
- VO

L min:		mm
L max:		mm
Stroke:		mm
W:		mm
H:		mm
SL(Slide):		mm
Speed max:		m/min
Acc. max:		m/s <sup>2</sup>
Quantity pb.		pce
Quantity pa.		pce

Your Company .....

Contact .....

Place/Country ..

Telephone .....

Email .....

# Ply Covers

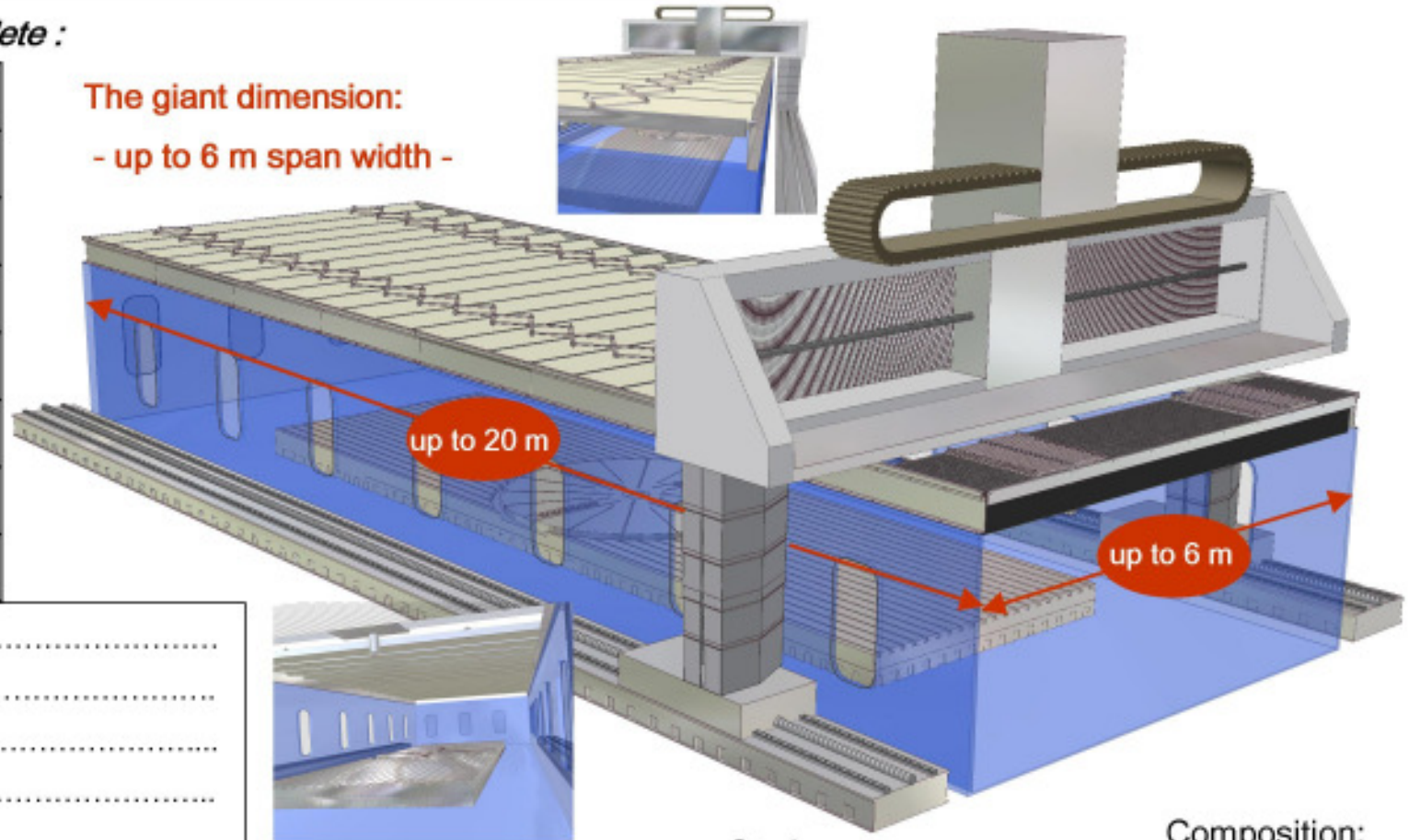
# thodacon

Wuxi Thodacon Machine Tool Accessory Co., Ltd.

*Inquiry form, please complete :*

FH:		mm
CP:		mm
Stroke:		mm
SL (Slide):		mm
ET:		mm
Span width:		mm
Speed max:		m/min
Acc. max:		m/s <sup>2</sup>

The giant dimension:  
- up to 6 m span width -



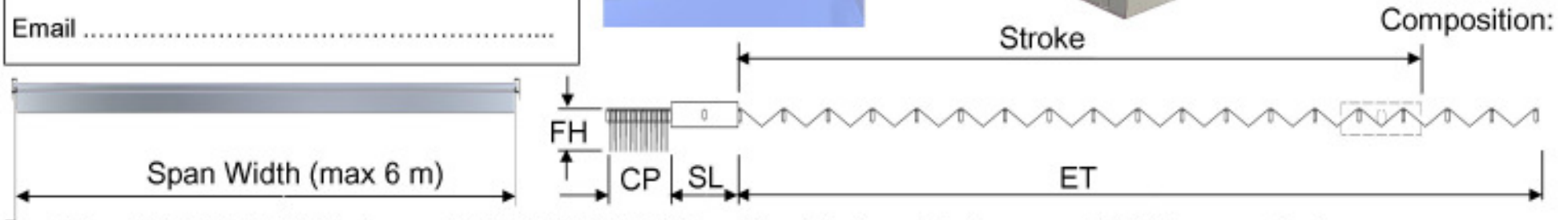
Your Company .....

Contact .....

Place/Country ..

Telephone .....

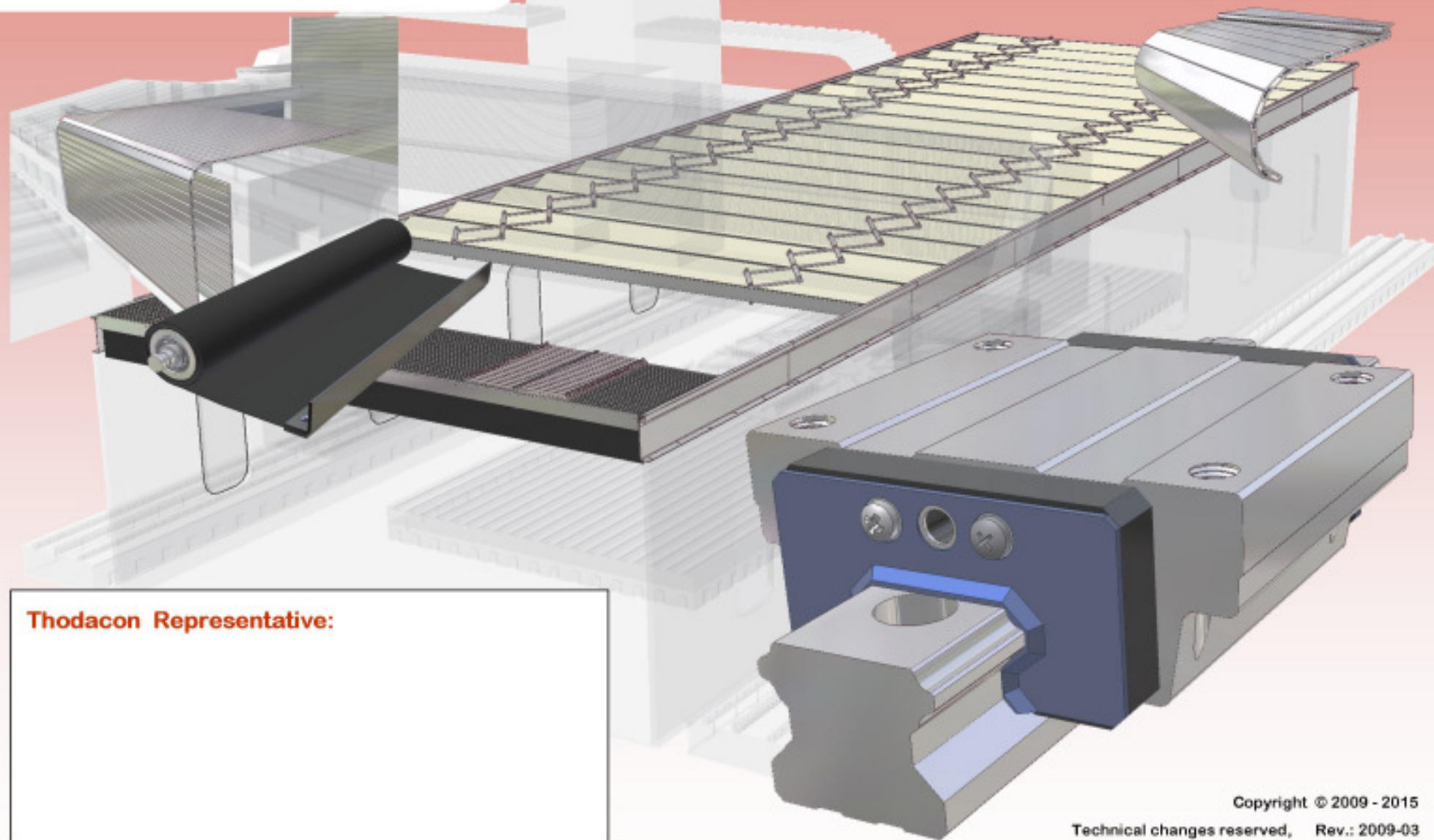
Email .....



# ***thodacon***

Wuxi Thodacon Machine Tool Accessory Co., Ltd.

***FOR GUIDEWAYS' LONGER LIFE ...***



**Thodacon Representative:**

Copyright © 2009 - 2015

Technical changes reserved, Rev.: 2009-03

无锡托达康机床附件有限公司 **Wuxi Thodacon Machine Tool Accessory Co., Ltd.**

Wuxi Qianqiao Xilu Rd. 300, 214153 Jiangsu Province, Tel: +86-510-8329-1518, Fax: +86-510-8329-1598, sd.thodacon@yahoo.com, www.thodacon.com